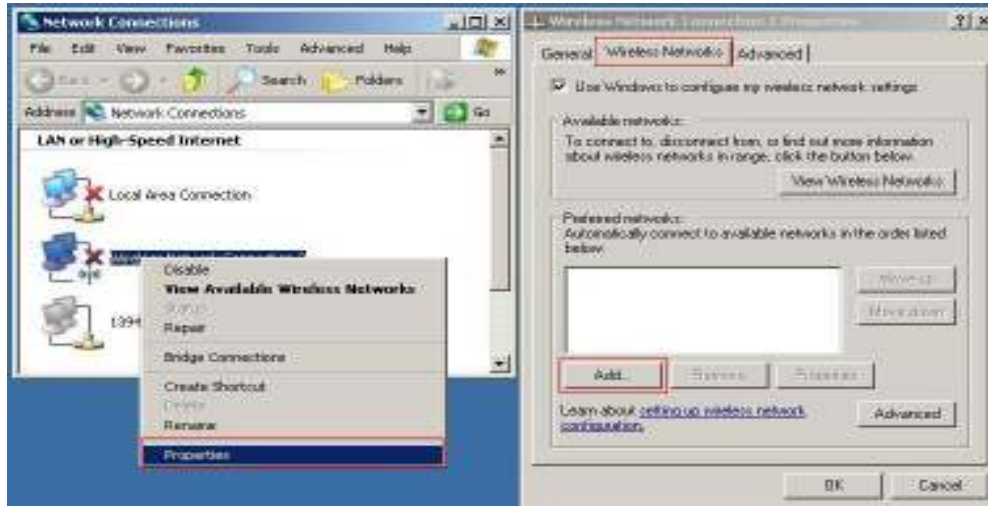
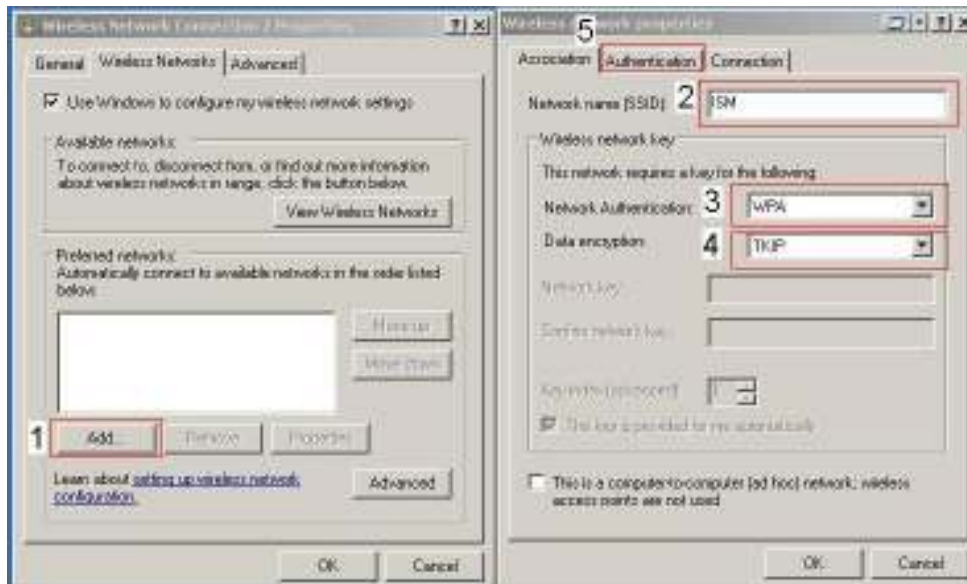


(Start->Settings->Network Connections->Wireless Network Connection->Properties->Wireless Networks)

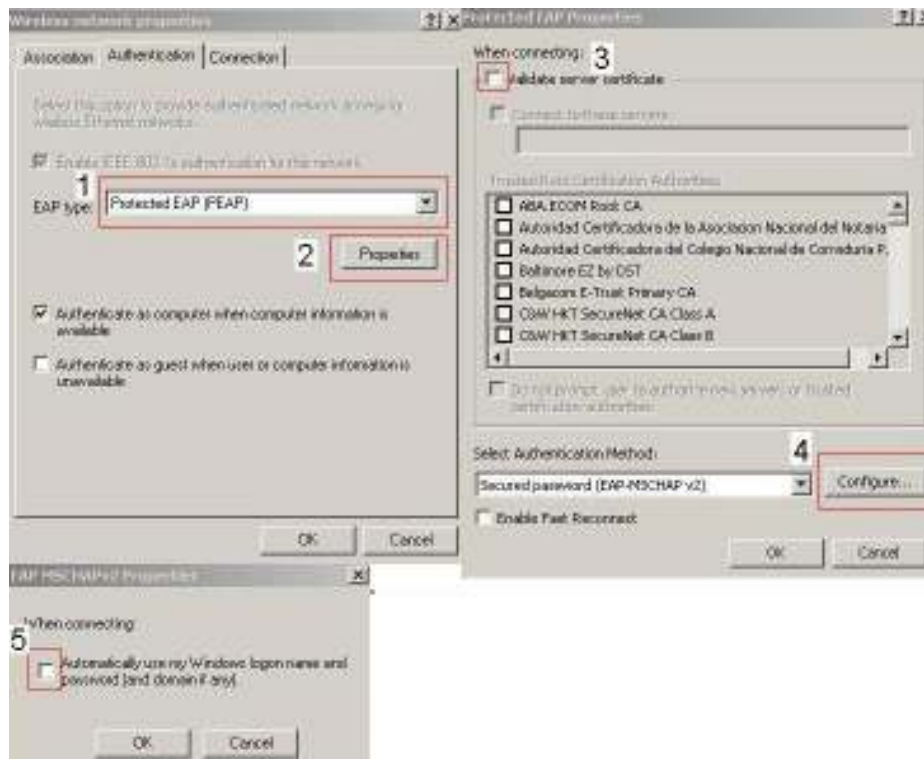
or (Start->Settings->Network Connections->Wireless Network Connection->Properties->Wireless Networks-View Available Wireless Networks-Change advanced settings)



1. Press „Add..“
2. „Network name (SSID“) write „ISM“
3. „Network Authentication“ choose „WPA“
4. „Data encryption“ choose „TKIP“
5. Go to „ Authentication “.



1. „EAP type:“ choose “Protected EAP (PEAP)“
2. Press „Properties“
3. „Validate server certificate“ unchecked
4. Press „Configure...“
5. „Automatically use my Windows logon and password (and domain if any)“ unchecked



Press „OK“.

1. Write your username
2. Write your password
3. „Logon domain“ write „ISM“

